


RESEARCH ARTICLE

Open Access



Comparative postoperative outcomes of GGN-dominant vs single lesion lung adenocarcinomas

Takamasa Hotta¹, Yukari Tsubata^{1*} , Akari Tanino¹, Mika Nakao¹, Yoshihiro Amano¹, Megumi Hamaguchi¹, Shunichi Hamaguchi¹, Koji Kishimoto² and Takeshi Isobe¹

Abstract

Background: Multiple synchronous ground glass nodules (GGNs) are known to be malignant, however, they tend to progress slowly. Multiple synchronous lesions in the same patient which show different characteristics must be treated individually.

Methods: This was a retrospective review of 34 lung adenocarcinoma patients with multiple synchronous GGNs in an Asian population. One hundred twenty-seven single lung adenocarcinoma patients were included for comparison purposes. The follow-up period was 5 years for all patients.

Results: The 5-year overall survival (OS) patients with multiple lesions did not differ from that of the patients with single lesions to a statistically significant extent (Single: 81.8% vs. Multiple: 88.2%, $P = 0.3602$). Dominant tumors (DTs) with a ground glass component and consolidation were divided into three categories based on the consolidation-to-tumor ratio on radiological imaging. No significant differences were observed among the three DT categories. Twenty-four patients had unresected GGNs, while a progression of the unresected GGN occurred in 10 of these cases. The OS and disease-free survival (DFS) curves of patients with and without GGN progression did not differ to a statistically significant extent (OS: 80% vs. 92.9%, $P = 0.3870$; DFS: 80% vs. 100%, $P = 0.0977$).

Conclusions: The outcomes were best predicted by the stage of the DT. After surgery patients require a careful follow-up because unresected GGNs may show progression. At the same time, the increase in residual lesions and the appearance of new GGNs were not related to OS. The management of such patients should be determined according to the DT with the worst prognosis.

Keywords: Multiple primary lung cancers, Adenocarcinoma, Ground glass opacity, Ground glass nodule, Surgical treatment

* Correspondence: ytsubata@med.shimane-u.ac.jp

¹Division of Medical Oncology & Respiratory Medicine, Department of Internal Medicine, Shimane University, 89-1 Enya-cho, Izumo, Shimane 693-8501, Japan

Full list of author information is available at the end of the article



© The Author(s). 2020 **Open Access** This article is licensed under a Creative Commons Attribution 4.0 International License, which permits use, sharing, adaptation, distribution and reproduction in any medium or format, as long as you give appropriate credit to the original author(s) and the source, provide a link to the Creative Commons licence, and indicate if changes were made. The images or other third party material in this article are included in the article's Creative Commons licence, unless indicated otherwise in a credit line to the material. If material is not included in the article's Creative Commons licence and your intended use is not permitted by statutory regulation or exceeds the permitted use, you will need to obtain permission directly from the copyright holder. To view a copy of this licence, visit <http://creativecommons.org/licenses/by/4.0/>. The Creative Commons Public Domain Dedication waiver (<http://creativecommons.org/publicdomain/zero/1.0/>) applies to the data made available in this article, unless otherwise stated in a credit line to the data.

Introduction

Low-dose computed tomography (CT) screening has led to a relative reduction in mortality from lung cancer [1], and an increase in the incidental diagnosis of small pulmonary ground glass nodules (GGNs) [2–5]. New guidance on the management of GGN is required and has been proposed [6, 7]. However, no standard algorithms have been established for multiple GGNs detected by screening. Thus, there is a lack of clinical evidence on their natural history, diagnosis and treatment.

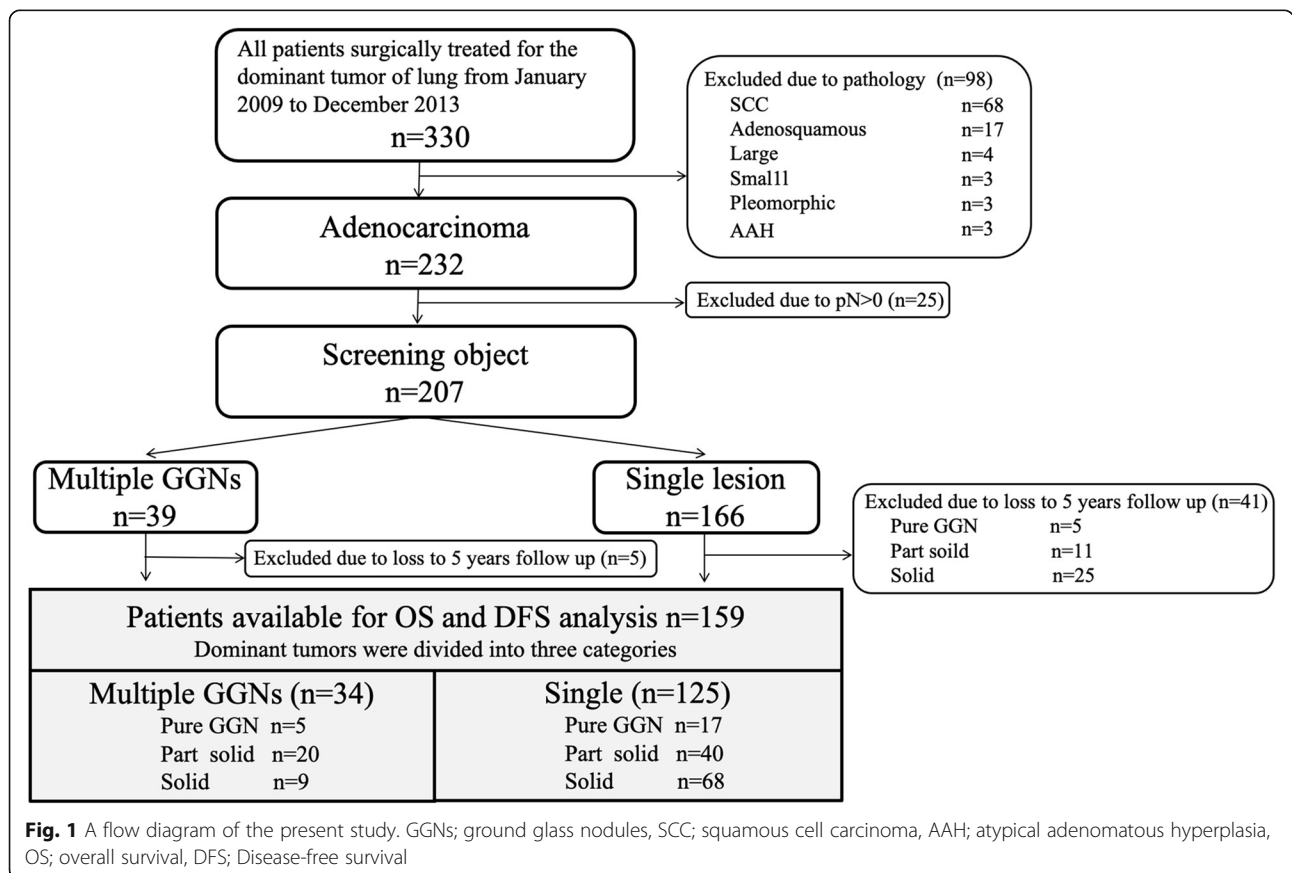
A number of studies have suggested that multiple GGNs have independent characteristics [8, 9]. Next-generation sequencing has shown that some multiple synchronous lesions show different mutation profiles in the same patient, while others share identical gene mutations [10]. These results suggest that the dominant tumor (DT) and synchronous GGNs are genetically independent tumors. Evidence is emerging that—given the independent characteristics of each of the multiple GGNs in a patient—the management of multiple GGNs should be determined based on the DT that carries the worst prognosis [11, 12]. Follow-up of the remaining lesions after the surgical treatment of the DT has been reported [13, 14]. However, there no reports have compared the outcomes of patients with multiple GGNs to those of patients with single lesions. Furthermore, in cases

of synchronous GGNs, the postoperative outcomes were compared according to the progression of DT in order to investigate whether priority should be given to the DT when deciding the treatment strategy.

Patients and methods

We retrospectively studied patients who were referred for surgery at Shimane University Hospital, from January 2009 to December 2013. Two hundred seven patients met the following criteria: [1] adenocarcinoma, and [2] pN0. Pre-operative CT scans were reviewed to identify synchronous GGNs. Thirty-nine patients had one or more lesions other than the DT. The DT was defined as the lung lesion of the largest diameter or the lesion that showed the most radiological invasiveness (margin of the nodule, pleural indentation, presence of a solid component).

DTs with a ground glass component and consolidation were divided into three categories based on the consolidation-to-tumor (C/T) ratio on radiological imaging: pure GGN (C/T ratio = 0), part solid (C/T ratio > 0 to < 1) and solid tumor (C/T ratio = 1). The following cases were excluded from analysis: [1] cases involving recurrent lung cancer or in which the outcome was unknown, [2] stable lung cancer cases for which CT data had not been obtained for 5 years after surgery (Fig. 1). Radiological interpretation



and date of recurrence were taken from the medical records as judged by two radiologists.

Lung cancers were staged in accordance with the seventh edition of the TNM Classification for Lung and Pleural Tumors. Echocardiography, spirometry, and lower limb echo in patients with a high d-dimer level were performed as preoperative tests. The preoperative CT-guided hookwire localization for pulmonary nodules, particularly for GGNs, was used. The operations typically removed the DT along with any accessible ipsilateral GGNs. Lobectomy with complete systematic lymph node dissection was the standard surgical treatment. Limited resection was applied for patients with severe complications and for the elderly, especially those presenting with pure GGNs. Lung adenocarcinomas were described pathologically as adenocarcinoma in situ, minimally invasive adenocarcinoma, invasive adenocarcinoma or variants of invasive adenocarcinoma. Slides were reviewed by a pathologist to confirm the presence of a lepidic component.

All patients were regularly evaluated by CT every 3 months for the first 2 years after surgery and every 6 months thereafter. Tegafur-uracil was selected as adjuvant treatment for T1b patients. Cisplatin-based adjuvant chemotherapy was selected for patients with stage II disease. Non-dominant GGNs that were followed were generally treated by either surgical resection or stereotactic radiotherapy (SRT), when they grew size with any solid component.

The patient and tumor characteristics were analyzed to identify factors associated with overall survival (OS), disease-free survival (DFS), and progression of GGN. OS was calculated from the date of surgery until either death from any cause or the date of last follow-up, with a minimum of 5 years of study inclusion. DFS was defined as survival without extrapulmonary metastasis, locoregional or distant recurrence, or GGN progression requiring intervention. GGN progression was defined as growth of a GGN, development of a new solid component in a pure GGN, or enlargement of a solid component in a part-solid GGN with stable total diameter. Considering the error due to CT slice thickness, growth was defined as an increase of ≥ 5 mm.

Statistical analyses

Statistical analyses were performed using the GraphPad Prism 7 software program (GraphPad Software, La Jolla, CA, USA). Qualitative variables were reported the frequency and percentage, while quantitative variables were reported as the mean and standard deviation. Comparisons between two groups were performed using the unpaired *t*-test for normally distributed data. Categorical variables were compared using Fisher exact test. OS and DFS were calculated from the date of surgery and estimated

using a Kaplan-Meier analysis. *P* values of < 0.05 were considered to indicate statistical significance.

Results

Patient characteristics

DFS and OS analyses were performed in 159 patients (multiple GGNs [$n = 34$] vs Single lesion [$n = 125$]). Dominant tumors were divided into three categories (Pure GGN, Part solid and Solid). Patients with multiple GGNs were divided into pure [$n = 5$], partly solid [$n = 20$] and solid [$n = 9$]. Patients with a single lesion were divided into pure [$n = 17$], partly solid [$n = 40$] and solid [$n = 68$] (Fig. 1). The patient and surgical characteristics are summarized in Table 1. There were 159 patients (multiple GGN [$n = 34$], pure GGN [$n = 17$], part solid [$n = 40$] and solid [$n = 68$]). Five years of follow-up was completed in all cases. All patients were Asians and underwent video-assisted thoracoscopic resections. Combined resection of multiple lesions was performed for 23% of the patients in the multiple GGN group. Twenty percent of the patients underwent wedge resection alone. Fatal complications occurred in 2 patients in the solid group due to pulmonary embolism and a pulmonary artery rupture. Histologically, no invasive cancer was found in the Pure GGN group. Chemotherapy was performed according to the DT tumor size (pStage). There were three patients with pStage IIa disease in the multiple GGN group who did not receive chemotherapy.

Postoperative outcomes

Table 2 lists the results of postoperative surveillance. There were 17 cases of postoperative recurrence (multiple [$n = 2$], part solid [$n = 3$], and solid [$n = 12$]). Eleven of them were positive for epidermal growth factor receptor (EGFR) mutations. The OS decreased as the C/T ratio increased (pure GGN, 94.1%; part solid, 90%; solid, 75%; Table 2).

Kaplan-Meier analyses (Fig. 2a) were performed to compare the patients with multiple lesions to those with single lesions; their survival did not differ to a statistically significant extent (single, 82.4% vs. multiple, 88.2%; $P = 0.3602$). There when the outcomes were compared according to the DT classifications (Pure GGN, 94.1% vs. multiple GGN [pure], 100%; part solid, 90% vs. multiple GGN [part], 90%; solid, 75% vs. multiple GGN [solid]: 77.8%; Fig. 2b–d). The DFS was similar to the OS (Fig. 3).

Characteristics of the DT and non-dominant GGNs in the multiple GGN group

Characteristics of the DT and the non-dominant GGN are summarized in Table 3. As for non-dominant GGN, there were 2 cases with very large numbers of nodules (46 and 18) in the part solid group; these cases were

Table 1 Patient characteristics

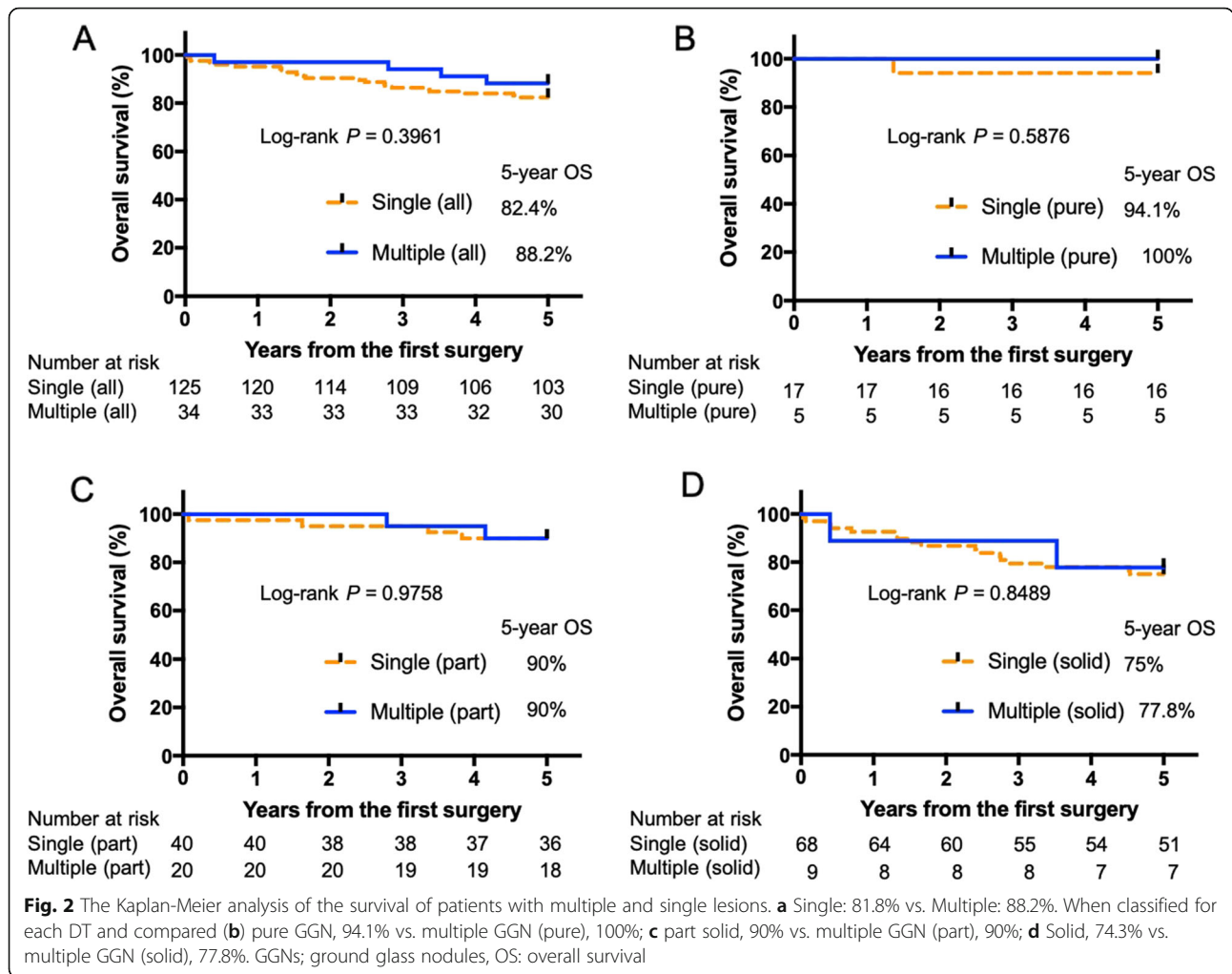
	Multiple (n = 34)	Single		
		Pure GGN (n = 17)	Part Solid (n = 40)	Solid (n = 68)
Age, (years)	73.7 ± 7.9	65.0 ± 11.2	71.3 ± 13.0	71.6 ± 9.4
Gender, (male/female), n	18/16	8/9	22/18	31/37
Previous cancer history, (Yes), n	3 (9)	4 (24)	11 (28)	13 (19)
Surgical procedure, n				
Operation				
Open Thoractomy	0	0	0	0
Video-assisted thoracoscopy	34 (100)	17 (100)	40 (100)	68 (100)
Resection type				
Wedge resection	7 (20)	10 (59)	5 (12)	4 (6)
Segmentectomy	0	0	3 (8)	1 (1)
Lobectomy	19 (37)	7 (41)	32 (80)	62 (92)
Combination	8 (23)	0	0	1 (1)
Fatal complications	0	0	0	2 (3)
Histology, n				
Adenocarcinoma in situ	15 (44)	15 (88)	9 (22)	1 (1)
Minimally-invasive adenocarcinoma	1 (3)	2 (12)	3 (8)	0
Invasive adenocarcinoma	17 (50)	0	26 (65)	59 (87)
Variants of invasive adenocarcinoma	1 (3)	0	2 (5)	8 (12)
Chemotherapy, n				
None	27 (79)	17 (100)	31 (78)	32 (47)
UFT	6 (18)	0	9 (22)	31 (46)
Cisplatin based chemotherapy	1 (3)	0	0	5 (7)
Dominant Tumor Size (mm)	23.7 ± 13.9	10.9 ± 4.6	19.4 ± 7.9	28.8 ± 20.1
pStage Ia, n	24 (70)	17 (100)	35 (87)	40 (59)
Stage Ib, n	6 (18)	0	4 (10)	23 (34)
Stage IIa, n	4 (12)	0	1 (3)	4 (6)
pStage IIb, n	0	0	0	1 (1)

Values are means ± standard deviations or number, number (percentage). GGN ground glass nodule, UFT tegafur-uracil

Table 2 The results of postoperative surveillance

	Multiple			Single		
	Pure GGN (n = 5)	Part Solid (n = 20)	Solid (n = 9)	Pure GGN (n = 17)	Part Solid (n = 40)	Solid (n = 68)
Recurrent patients, n	0	1 (5)	1 (11)	0	3 (8)	12 (18)
Mutation status, n						
EGFR (+)	0	1 (100)	1 (100)	0	1 (33)	7 (62)
EGFR (–)	0	0	0	0	1 (33)	2 (15)
Unknown	0	0	0	0	1 (33)	3 (23)
Histology, n						
Adenocarcinoma in situ	0	0	0		1 (33)	0
Invasive adenocarcinoma	0	1 (100)	1 (100)		2 (67)	12 (100)
5-year overall survival, %	100	90	77.8	94.1	90	75
5-year disease-free survival, %	100	95	87.5	100	92.2	80.2

Values are the number (percentage) or percentage
GGN ground glass nodule, EGFR epidermal growth factor receptor



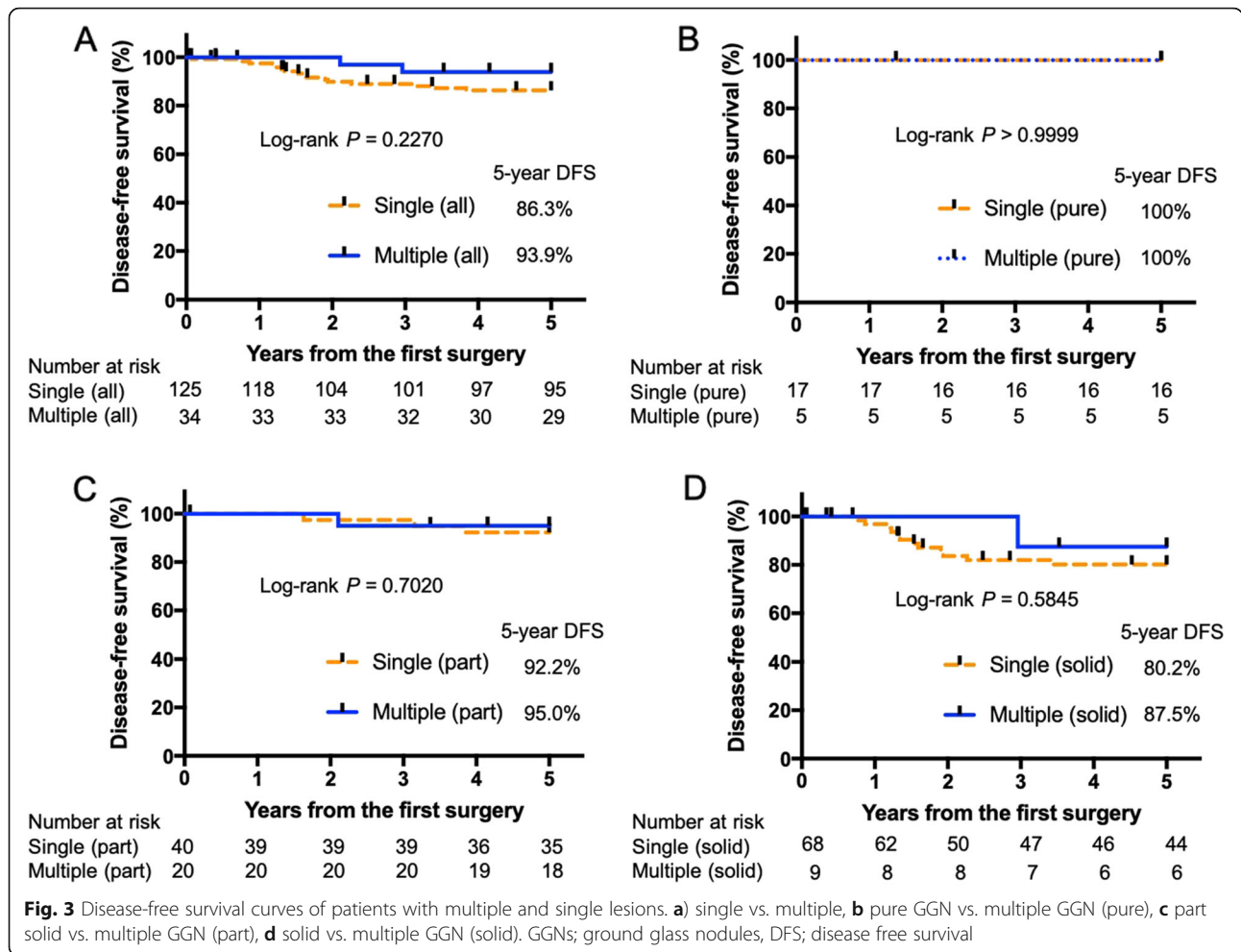
excluded as outliers. Radiographically, the mean diameters of the DTs were as follows: Pure GGN, 8.6 ± 4.6 mm; part solid, 21.7 ± 11.6 mm; and solid, 36.8 ± 11.2 mm. The mean diameters of the largest non-dominant GGN at presentation were as follows: pure GGN, 8.1 ± 1.8 mm; part solid, 8.2 ± 5.2 mm; and solid, 17.5 ± 11.7 mm. The numbers of with non-dominant GGNs were as follows: pure GGN (range, 1–2), $n = 8$; part solid (range, 1–7), $n = 38$; and solid (range, 1–5), $n = 17$. Four pure GGNs (50%), 19 part solid GGNs (50%) and 9 solid GGNs (53%) were identified in the contralateral lung to the DT. Some of the lesions in the lung lobe that differed from the DT could not be resected. Twenty-six patients had unresected GGNs. Two patients were excluded due to an extremely large numbers of unresected GGNs ($n = 46$ and 18). Finally, 24 patients were included in the unresected GGNs analysis. In 10 of these patients, disease progression was observed in the unresected GGNs (Fig. 4). In 2 cases, additional

surgery or SRT was performed to treat the unresected GGN. Most unresected GGNs were pure GGN and none had a C/T ratio of > 0.5 .

Characteristics of the patients with GGN progression

The characteristics of the patients with or without progression of GGN are summarized in Table 4. The mean size of the unresected GGNs in the any GGN progression group was predominantly larger than that in the other group (mean size, 10.3 ± 5.2 mm vs. 6.5 ± 4.3 mm, respectively $P = 0.0004$). The OS curve of the cases with and without GGN progression did not differ to a statistically significant extent (80% vs. 92.9%, $P = 0.3870$).

The transition of the size of the 38 unresected GGNs on CT is shown in Fig. 5a. Twelve GGNs fulfilled the growth condition. Among them, 10 GGNs showed a change in size changed within 3 years. It took four years for all lesions change in size. The tumors of the GGNs that changed in size were significantly larger than no



growth tumors (mean size 11.7 ± 5.8 mm vs. 6.9 ± 3.8 mm, $P = 0.0003$) (Fig. 5b).

Discussion

In this study, we compared multifocal GGNs and single lesions. The number of GGNs had no impact on the OS. As in the case of single lesions, the OS changed according to the pStage. The increase in residual lesions and the appearance of new GGNs were not associated with the OS.

Several studies have reported similar results, showing that prolonged survival was generally achieved by anatomic resection of the DT and wedge resection of the accessible GGNs [11, 14–16]. As for OS and DFS, our results were similar to those of several previous studies. The novelty of this study was that it directly compared the outcomes of patients with multiple GGNs to those of patients with single lesions. The DTs were divided into three categories based on the C/T ratio, and the OS and DFS graphs for multiple

and single lesions overlapped. In patients with multiple GGNs, management should be determined based on the DT with the worst prognosis.

Regarding unresected GGNs, previous studies have shown that many lesions remained unchanged, but that a certain proportion increase in size. No relationship was found between the prognosis and progression of the unresected GGN in this study, which is in line with previous reports [15, 16]. In order to reduce wasteful follow-up, we think that is necessary to screen patients and lesions that are likely to increase in size. In this study, we found that the larger unresected GGN tended to increase in size. As far as the lesion was concerned, we found that lesions that were larger in size were more likely to grow. In previous reports, the size of the DT and the proportion of the solid component were also associated with an increased risk of lesion growth [15, 16]. When possible, resecting larger-sized lesions with the DT may be the most efficient approach.

Table 3 Characteristics of patients with multiple GGNs

	Multiple (N = 34)		
	Pure GGN	Part Solid	Solid
Patients, <i>n</i>	5	20	9
Dominant Tumor Size (mm)	8.6 ± 4.6	21.7 ± 11.6	36.8 ± 11.2
Nondominant GGN			
Largest GGN size (mm)	8.1 ± 1.8	8.2 ± 5.2	17.5 ± 11.7
Number, <i>n</i> (range per patient)	8 (1–2)	38 (1–7)	17 (1–5)
Location per GGN			
Ipsilateral lung			
Same lobe, <i>n</i>	2 (25)	7 (18)	6 (35)
Different lobe, <i>n</i>	2 (25)	12 (32)	2 (12)
Contralateral lung, <i>n</i>	4 (50)	19 (50)	9 (53)
Unresected GGN, <i>n</i>			
Patients, <i>n</i>	5	22	11
Patients with unresected GGN that grew, <i>n</i>	3	14	7
Patients with intervention for unresected GGN, <i>n</i>	0	7	3
Stereotactic radiotherapy, <i>n</i>	0	2	0
Surgical resection, <i>n</i>	0	1	0
C/T ratio			
= 0, <i>n</i>	5 (100)	19 (86)	11 (100)
0 < C/T ratio < 0.5, <i>n</i>	0	3 (14)	0

Values are the mean ± standard deviation, number, number (percentage) or number (range per patient)
GGNs ground glass nodules

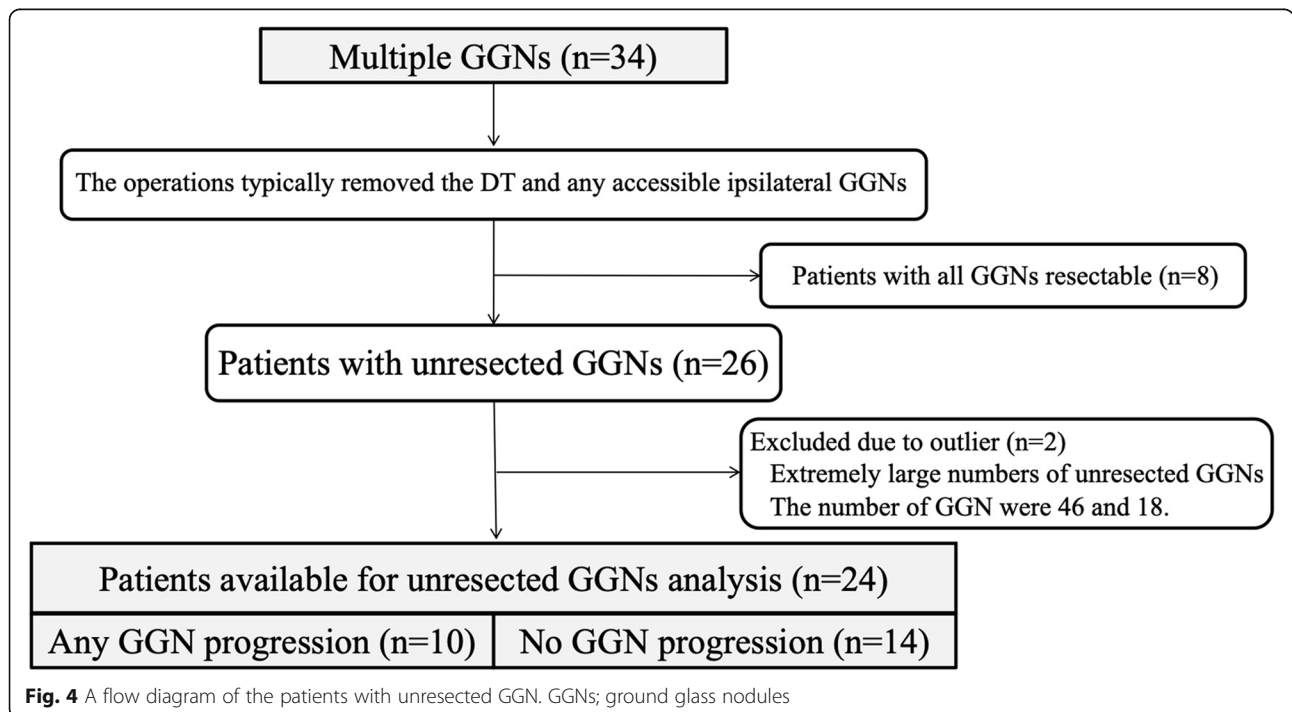


Fig. 4 A flow diagram of the patients with unresected GGN. GGNs; ground glass nodules

Table 4 Characteristics of patients with GGN progression

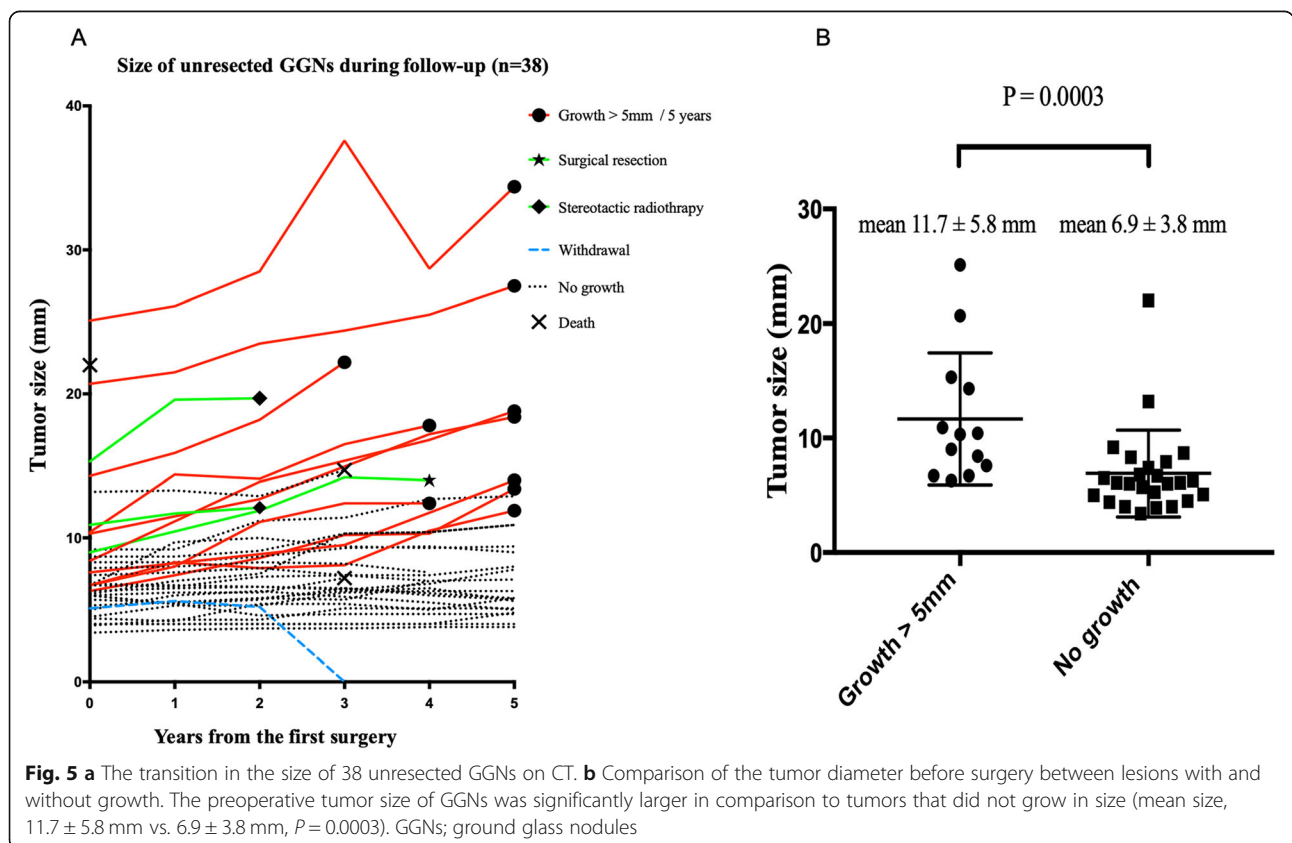
	Unresected GGN (+)		P=
	Progression N = 10	No progression N = 14	
Age, (years)	72.9 ± 8.1	72.9 ± 9.1	0.9656
Gender, (male/female), n	5/5	5/9	0.6785
Dominant Tumor Size (mm)	28.4 ± 12.7	20.9 ± 14.5	0.1580
Smoking status (Pack-year)	19.4 ± 21.9	8.3 ± 13.7	0.3280
Dominant Tumor Histology, n			0.2138
Adenocarcinoma in situ	3 (30)	9 (64)	
Invasive adenocarcinoma	7 (70)	5 (36)	
Unresected GGN, n	20	18	
Mean GGN size (mm)	10.3 ± 5.2	6.5 ± 4.3	0.0004
Largest GGN size (mm)	12.4 ± 6.4	7.2 ± 4.6	0.0681
Survival			
5-year overall survival, %	80	92.9	0.387

Values are the mean ± standard deviation, number, number (percentage) or percentage
GGN ground glass nodule

Regarding the follow-up period, GGNs may take 3–4 years to begin to increase in size [17–19]. The same period was considered to be necessary in this study. Patients should be followed up for the same period.

Adenocarcinoma with EGFR mutation is reported to be associated with a higher incidence of GGN in comparison to adenocarcinoma with wild-type EGFR [20]. Many of the recurrent cases in this study had EGFR mutations. Even in early-stage lung cancer, if patients have GGN lesions, the EGFR gene mutation status should be investigated during follow-up. However, it is worth noting that there are many reports of cases in which genetic analyses revealed differences between the DT and synchronous GGNs [10].

The present study was associated with some limitations, including the biases associated with the lack of randomization, as well as the relatively small sample size and limited statistical power. We were unable to analyze the effect of the mutation status. The strength of this study was that it compared the outcomes of patients with multiple GGNs to those of patients with a single lesion. There were no differences between the groups with regard to the methods of treatment and follow-up, and it is considered to be appropriate as a comparative group.



Conclusions

The postoperative outcome of lung adenocarcinoma with synchronous GGN was good.

The outcomes were best predicted by the stage of the DT. After surgery, patients require careful follow-up because unresected GGNs grow in size. At the same time, it is also true that many patients may not require follow-up.

Abbreviations

CT: Computed tomography; GGNs: Ground glass nodules; DT: Dominant tumor; OS: Overall survival; DFS: Disease-free survival; C/T: Consolidation-to-tumor; SRT: Stereotactic radiotherapy; EGFR: Epidermal growth factor receptor

Acknowledgements

Not applicable.

Authors' contributions

Conception and design: TH, YT. Information Acquisition: TH, AT, MN, YA, MH, SH, KK. Drafting of Manuscript: TH, YT, MN, YA, MH, SH, KK, TI. Critical Review: YT, TI. The authors read and approved the final manuscript.

Funding

No funding was obtained for this manuscript.

Availability of data and materials

Not applicable.

Ethics approval and consent to participate

This study conforms to the ethical guidelines in a priori approval by the local Ethical Committee of the Shimane University. Our research was approved by the Shimane University Research Ethics committee (approval number: 3672, approval date: April 23, 2019).

Consent for publication

This manuscript has not been published or presented elsewhere in part or in entirety and is not under consideration by another journal. All the authors have approved the manuscript and agree with submission to your esteemed journal.

Competing interests

The authors have no competing interests to disclose.

Author details

¹Division of Medical Oncology & Respiratory Medicine, Department of Internal Medicine, Shimane University, 89-1 Enya-cho, Izumo, Shimane 693-8501, Japan. ²Division of Thoracic Surgery, Shimane University, 89-1 Enya-cho, Izumo, Shimane 693-8501, Japan.

Received: 7 May 2020 Accepted: 15 June 2020

Published online: 22 June 2020

References

- Aberle DR, Adams AM, Berg CD, et al. Reduced lung-cancer mortality with low-dose computed tomographic screening. *N Engl J Med*. 2011; 365:395–409.
- Church TR, Black WC, Aberle DR, et al. Results of initial low-dose computed tomographic screening for lung cancer. *N Engl J Med*. 2013;368:1980–91.
- Zhao SJ, Wu N. Early detection of lung cancer: low-dose computed tomography screening in China. *Thoracic Cancer*. 2015;6:385–9.
- Nawa T, Nakagawa T, Mizoue T, et al. Low-dose computed tomography screening in Japan. *J Thorac Imaging*. 2015;30:108–14.
- Yousaf-Khan U, van der Aalst C, de Jong PA, et al. Final screening round of the NELSON lung cancer screening trial: the effect of a 2.5-year screening interval. *Thorax*. 2017;72:48–56.
- Siho AD, Cardillo G. Solitary pulmonary ground-glass opacity: is it time for new surgical guidelines? *Eur J Cardiothorac Surg*. 2017;52:848–51.
- Lococo F, Cusumano G, De Filippis AF, et al. Current practices in the Management of Pulmonary Ground-Glass Opacities: a survey of SICT members. *Ann Thorac Surg*. 2018;106:1504–11.
- Wu C, Zhao C, Yang Y, et al. High discrepancy of driver mutations in patients with NSCLC and synchronous multiple lung ground-glass nodules. *J Thorac Oncol*. 2015;10:778–83.
- Liu M, He WX, Song N, et al. Discrepancy of epidermal growth factor receptor mutation in lung adenocarcinoma presenting as multiple ground-glass opacities. *Eur J Cardiothorac Surg*. 2016;50:909–13.
- Park E, Ahn S, Kim H, et al. Targeted sequencing analysis of pulmonary adenocarcinoma with multiple synchronous ground-glass/Lepidic nodules. *J Thorac Oncol*. 2018;13:778–83.
- Shimada Y, Saji H, Otani K, et al. Survival of a surgical series of lung cancer patients with synchronous multiple ground-glass opacities, and the management of their residual lesions. *Lung Cancer*. 2015;88:174–80.
- Hattori A, Matsunaga T, Takamochi K, et al. Radiological classification of multiple lung cancers and the prognostic impact based on the presence of a ground glass opacity component on thin section computed tomography. *Lung Cancer*. 2017;113:7–13.
- Sobin LH, Gospodarowicz MK, Wittekind C. *TNM classification of malignant tumours*. 7th ed: Wiley-Blackwell; 2009.
- Gu B, Burt BM, Merritt RE, et al. A dominant adenocarcinoma with multifocal ground glass lesions does not behave as advanced disease. *Ann Thorac Surg*. 2013;96:411–8.
- Gao RW, Berry MF, Kunder CA, et al. Survival and risk factors for progression after resection of the dominant tumor in multifocal, lepidic-type pulmonary adenocarcinoma. *J Thorac Cardiovasc Surg*. 2017;154:2092–9.
- Bongiolatti S, Corzani R, Borgianni S, et al. Long-term results after surgical treatment of the dominant lung adenocarcinoma associated with ground-glass opacities. *J Thorac Dis*. 2018;10:4838–48.
- Hasegawa M, Sone S, Takashima S, et al. Growth rate of small lung cancers detected on mass CT screening. *Br J Radiol*. 2000;73:1252–9.
- Aoki T, Nakata H, Watanabe H, et al. Evolution of peripheral lung adenocarcinomas: CT findings correlated with histology and tumor doubling time. *AJR Am J Roentgenol*. 2000;174:763–8.
- Kobayashi Y, Fukui T, Ito S, et al. How long should small lung lesions of ground-glass opacity be followed? *J Thorac Oncol*. 2013;8:309–14.
- Suh YJ, Lee HJ, Kim YJ, et al. Computed tomography characteristics of lung adenocarcinomas with epidermal growth factor receptor mutation: a propensity score matching study. *Lung Cancer*. 2018;123:52–9.

Publisher's Note

Springer Nature remains neutral with regard to jurisdictional claims in published maps and institutional affiliations.

Ready to submit your research? Choose BMC and benefit from:

- fast, convenient online submission
- thorough peer review by experienced researchers in your field
- rapid publication on acceptance
- support for research data, including large and complex data types
- gold Open Access which fosters wider collaboration and increased citations
- maximum visibility for your research: over 100M website views per year

At BMC, research is always in progress.

Learn more biomedcentral.com/submissions

